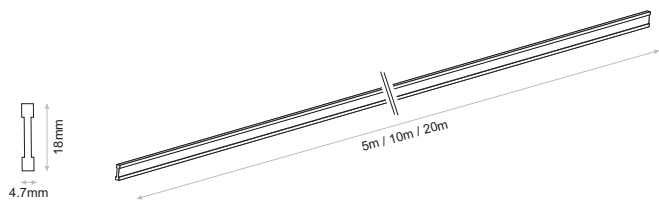


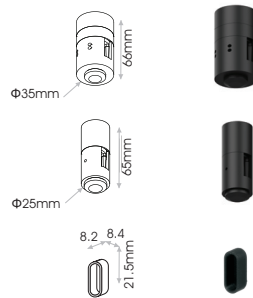
**Forma Flex Surface Track**

Code	Model	Length	Colour
<b>FFL.001</b>	Forma Flex Surface Track	5m	Black
<b>FFL.002</b>	Forma Flex Surface Track	10m	Black
<b>FFL.003</b>	Forma Flex Surface Track	20m	Black



**Accessories for Forma Flex System**

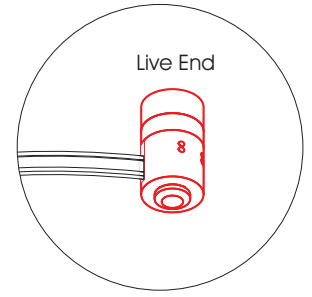
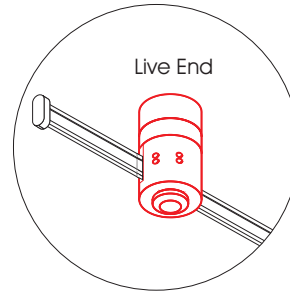
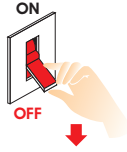
Code	Description	Colour
<b>FFL.004</b>	Live End	Black
<b>FFL.005</b>	Track Holder	Black
<b>FFL.019</b>	End Cap	Black



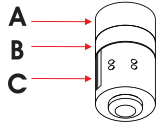
**FOLMA FLEX LIVE END**



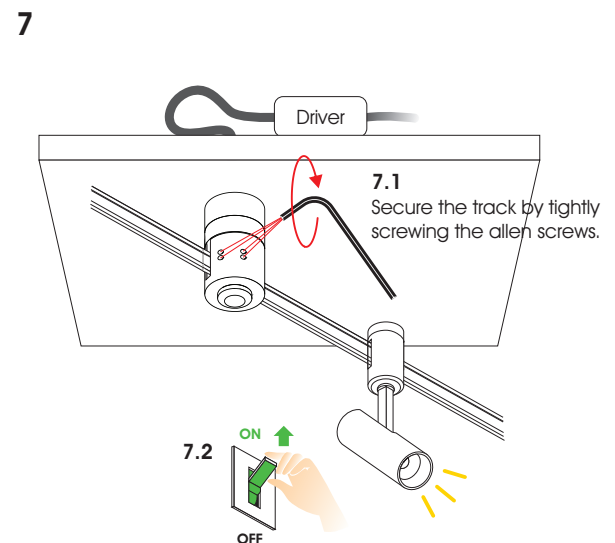
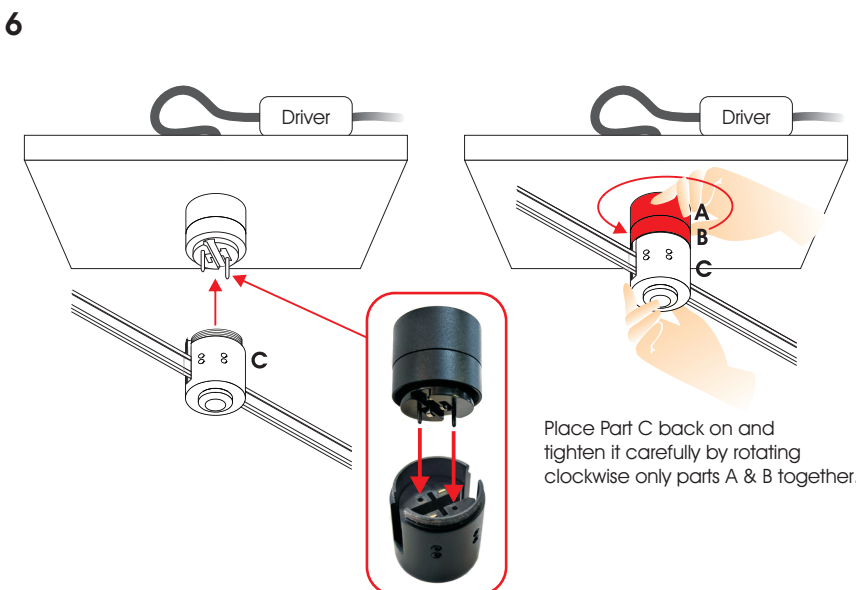
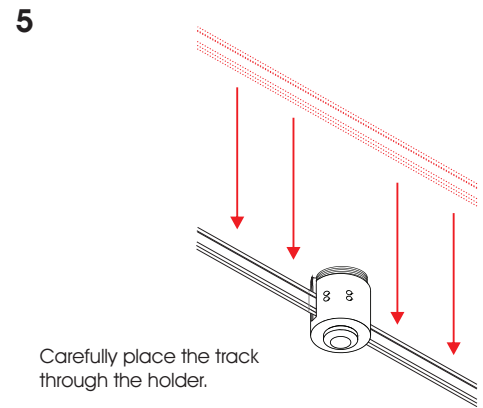
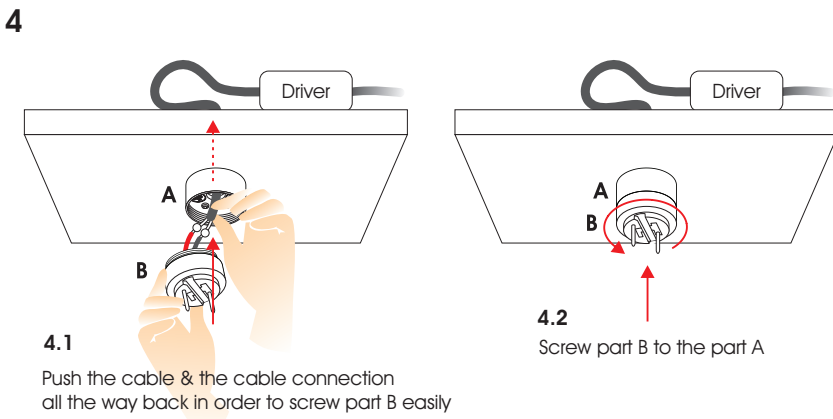
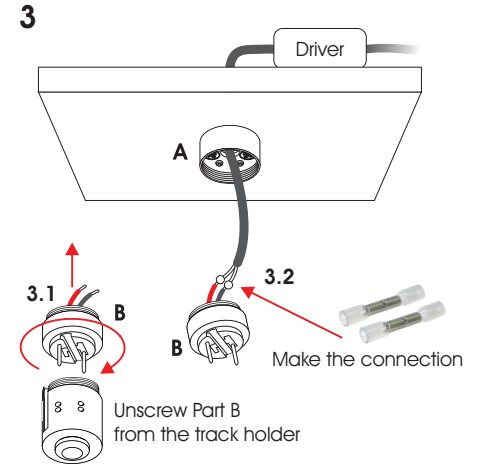
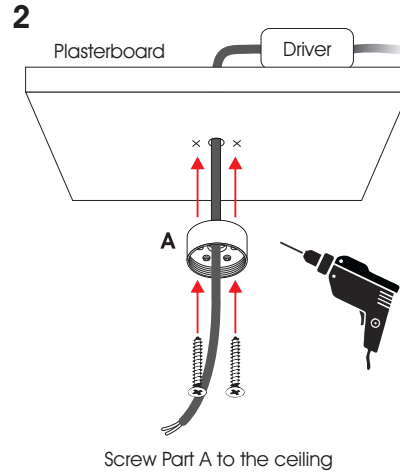
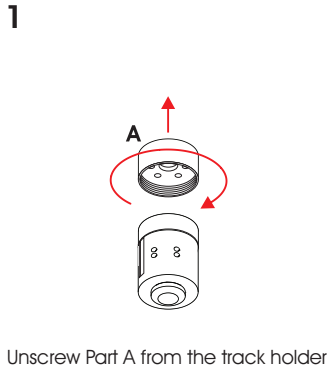
**Attention**  
Switch off the main power.



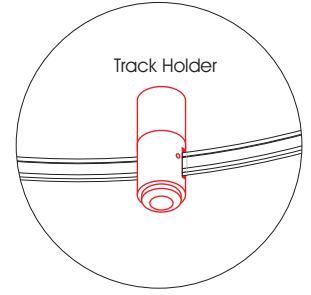
LIVE END



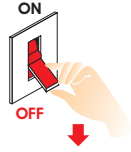
A: Upper base part  
B: Upper body  
C: Lower body



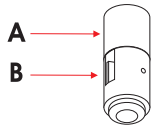
**FOLMA FLEX TRACK HOLDER**



**Attention**  
Switch off the main power.



Track Holder



A: Base part  
B: Holder

**1**

Unscrew Part A from the track holder

**2**

Plasterboard

Screw Part A to the ceiling

**3**

Carefully place the track through the holder.

**4**

**5**

Place Part B back on and tighten it carefully by rotating clockwise only part A.

**6**

Secure the track by tightly screwing the allen screws.

**7**

## How to place FORMA FLEX luminaires in other position

1

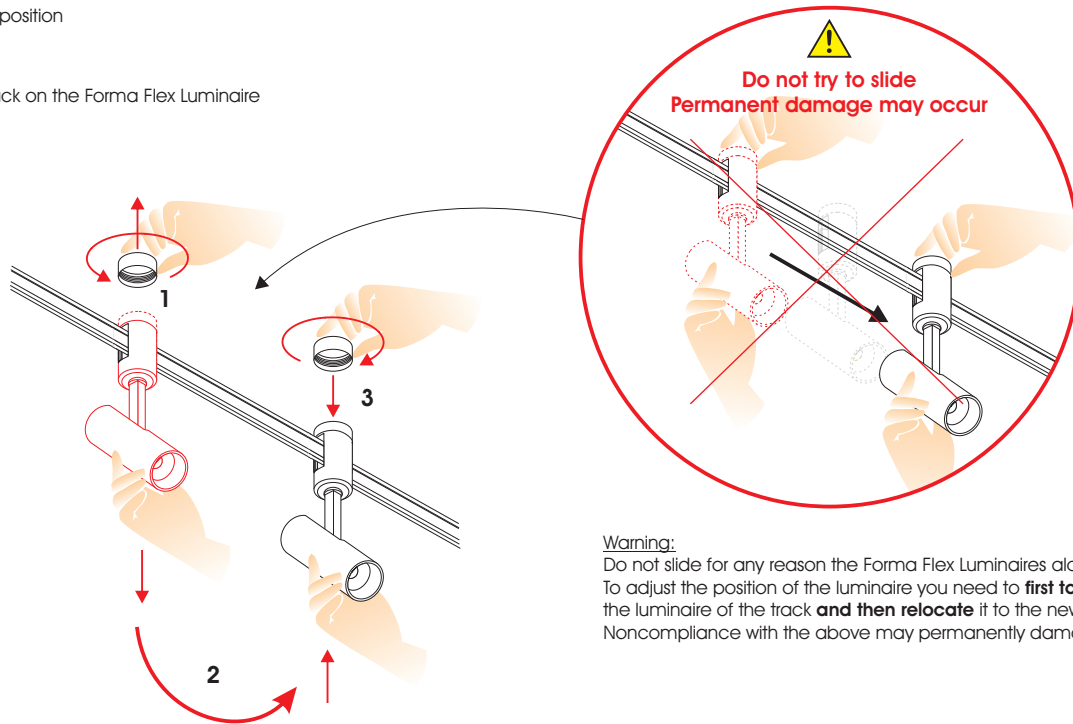
Unscrew upper part from Forma Flex Luminaire

2

Place to your desire position

3

Screw upper part back on the Forma Flex Luminaire



Warning:

Do not slide for any reason the Forma Flex Luminaires along the track. To adjust the position of the luminaire you need to **first take out** the luminaire of the track **and then relocate** it to the new position on the track. Noncompliance with the above may permanently damage the luminaire.